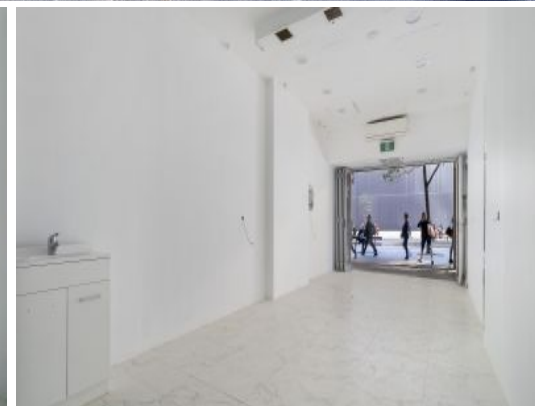
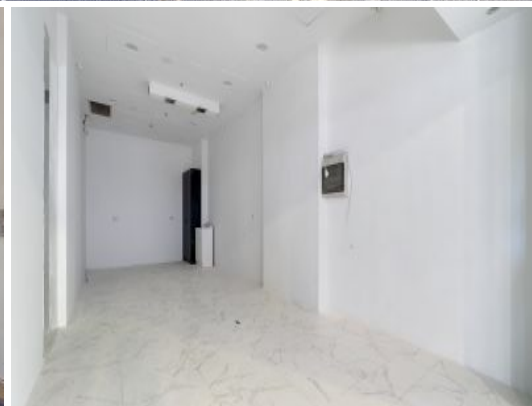


MERCER PROPERTY



Shop 6/27 Park Street Sydney, NSW

Prime CBD retail

- High pedestrian foot traffic
- Versatile shop, suits a var

Mercer Property is delighted to present to the market this outstanding retail shop in the heart of Sydney's CBD.

This property features;

- 31.4sqm of open plan layout.
- Recently renovated shop, easy to fit-out.
- Bi-folding shop front with great signage potential.

For further informatio

Contact Agent

Type : Retail
Building Size : 31.4 m2

Matt Davoren

0410 488 437

Tom Speakman

0412 891 330