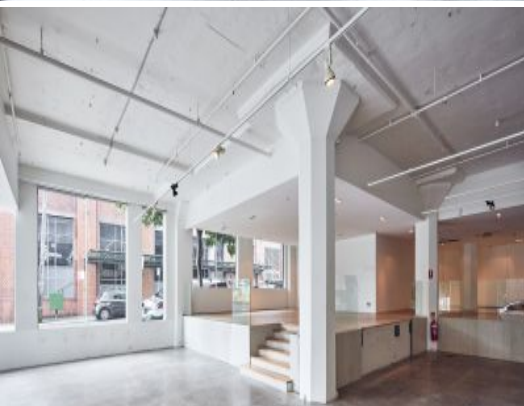


MERCER PROPERTY



184 Chalmers Street Surry Hills, NSW

184 Chalmers - One Of Sydney's Finest Retail Showrooms

Mercer Property is pleased to present to the market for lease 184 Chalmers Street, Surry Hills.

Situated in the heart of Sydney's inner-city creative district and only metres from Central Station, this premium corner positioned showroom has a long history of housing some of Australia's most successful luxury homeware and furniture companies; Spence & Lyda and Poliform Furniture.

Boasting over a 50 metre frontage to both Chalmers and Belvoir Streets, this outstanding 754sqm open plan space provides its occupants with the ultimate designer "modern/industrial" feel to the showroom. With soaring ceiling heights up to 4.5 metres, exposed concrete ceilings and travertine

Contact Agent

Type : Showrooms/Bulky Goods
Building Size : 754 m2

Council Rates : \$0.00 p/q
Water Rates : \$0.00 p/q
Strata Rates : \$0.00 p/q

Tom Speakman

0412 891 330

Matt Davoren

0410 488 437