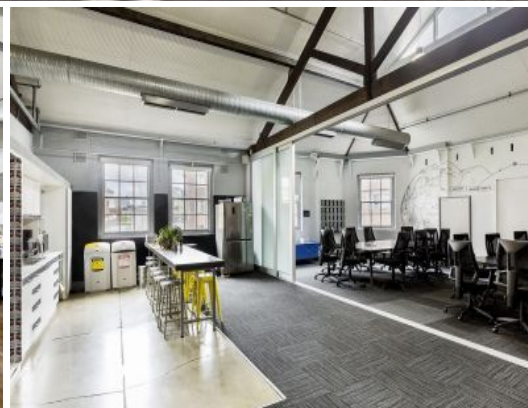


MERCER PROPERTY



Level 1 & 3/47 Murray Street Pyrmont, NSW

Classic Warehouse Conversion in Covered Pyrmont

- Excellent natural light
- Fully fitted for 40-80 workstations
- Boardroom, meeting rooms & break out areas

Mercer Property is delighted to offer to the market for lease 47 Murray Street, Pyrmont.

Located at 47 Murray Street, Pyrmont these fully fitted, whole-floor warehouse offices, features such as exposed brickwork and polished timber floors, which are enhanced by heritage windows from three elevations allowing an abundance of natural light throughout the offices. The building benefits from direct access to over 100 speciality stores in the Harbourside Shopping Centre, the newly developed Sofitel Darling Harbour & the renowned International Convention Centre

Contact Agent

Type : Offices
Building Size : 443 m2

Tom Speakman

0412 891 330

Matt Davoren

0410 488 437