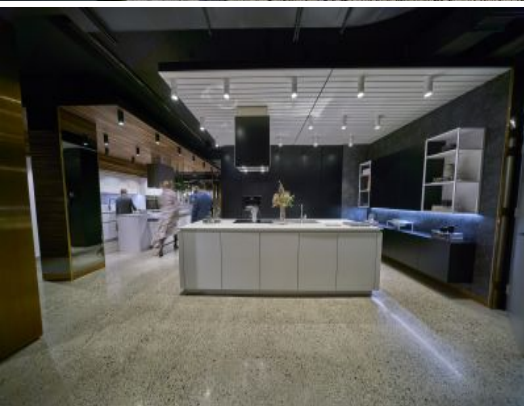


MERCER PROPERTY



619 Elizabeth Street Redfern, NSW

Premier Retail Showroom In Modern Creative Building

- Flagship retail/showroom offering;
- Premium, near new building;
- Open plan layout;

Mercer Property is excited to present to the market for lease this rare, versatile showroom/office in the heart of the city fringe.

Features include:

Available areas: 200-538sqm
Commanding frontage; s

Contact Agent

Type : Retail
Building Size : 538 m2

Council Rates : \$0.00 p/q
Water Rates : \$0.00 p/q
Strata Rates : \$0.00 p/q

Tom Speakman

0412 891 330

Dillon Frain

0416 867 155