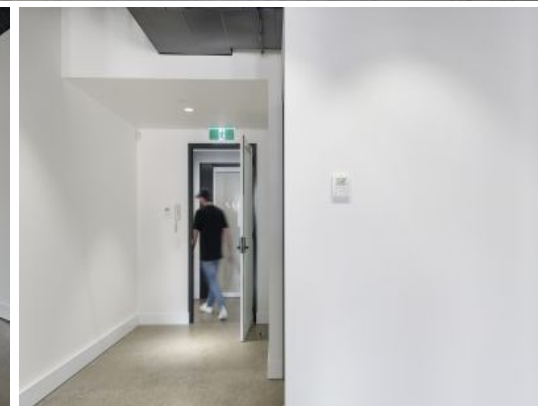
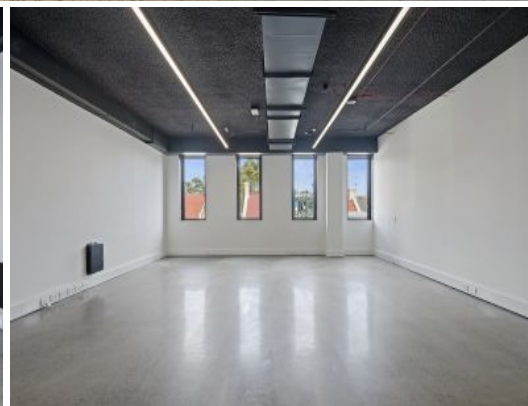
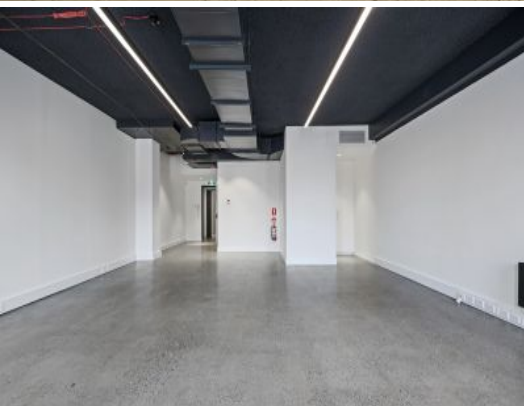


MERCER PROPERTY



3/619 Elizabeth Street Redfern, NSW

Impeccable Suite Ready For Occupation

Mercer Property is pleased to present to the market for lease, a desirable office suite, located in the heart of Redfern

Located in the creative hub of Redfern, this address is emerging as one of the city fringe's finest commercial buildings, offering a space that will appeal to creative businesses.

- Internal area of 69sqm* (approximately)
- Flexible floor plate with an open plan layout
- Polished concrete floors
- Large volume within throughout thanks to soaring ceilings
- Ducted AC throughout
- Minutes to Redfern Train Station
- Surrounded by some o

Contact Agent

Type : Offices
Building Size : 69 m2

Council Rates : \$0.00 p/q
Water Rates : \$0.00 p/q
Strata Rates : \$0.00 p/q

Tom Speakman

0412 891 330

Dillon Frain

0416 867 155