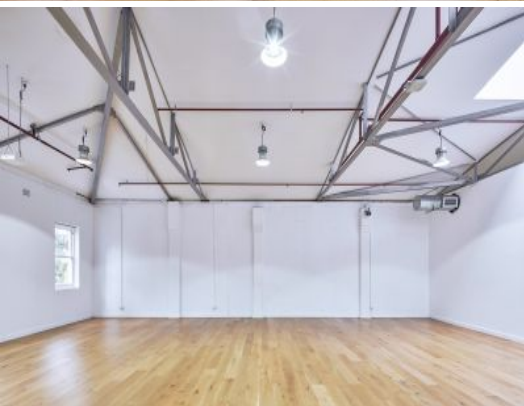


MERCER PROPERTY



24 Wellington Street Waterloo, NSW

Well Appointed Creative Warehouse Conversion

Mercer Property is excited to present to the market for lease 24 Wellington Street, Waterloo. An immaculately presented, creative HQ in the heart of the City Fringe. Ideally located within close proximity to both Elizabeth Street and Green Square Train Station, the building lends itself to a variety of creative and professional uses. Surrounded by an abundance of quiet streets, offering all-day parking solutions along with amenities close by including cafes, gyms, bars and restaurants.

Availability:

Level 1, Tenancy 5 ? 401sqm

Level 1, Tenancy 6 ? 374sqm

Level 1, Tenancy 5 & 6 combined ? 775sqm

- Polished wooden floor

Contact Agent

Type : Offices

Building Size : 775 m2

Council Rates : \$0.00 p/q

Water Rates : \$0.00 p/q

Strata Rates : \$0.00 p/q

Tom Schultz

0403 656 174

Dillon Frain

0416 867 155